

PERSONAL INFORMATION
(Please print)

NAME _____

ADDRESS _____

CITY STATE ZIP _____

PHONE _____

EMAIL _____

We understand that the monies pledged to the **Planned Offering Program** are tax deductible and that all information provided herein is confidential.

SIGNATURE _____ DATE _____

You may mail your pledge, or drop it in the collection basket or at the parish reception desk.

For further information, please contact Kim Carter, Director of Parish Operations at 773-281-0371 x22 or kimc@stclementchurch.org.

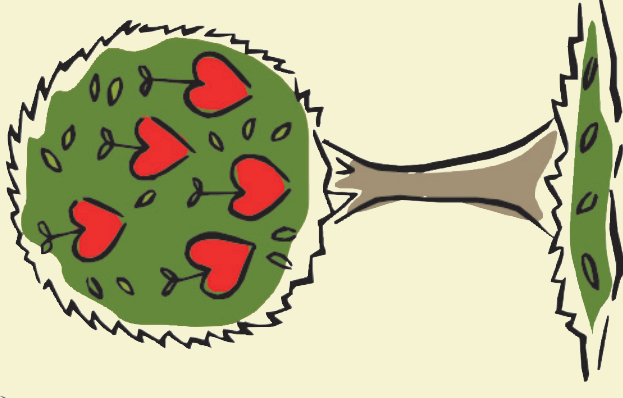
Place Stamp Here

*Ways to Get Involved
with Your Parish*

- Welcome others to Saint Clement by helping with newcomer hospitality or community building activities.
- Help out with Anchor Ball, our annual fundraising event which benefits both the church and school.
- Volunteer to serve in the community at the Lincoln Park Shelter, Ronald McDonald House, St. Vincent de Paul Center or various other places through Saint Clement's Donate-a-Day program.
- Join other Young Adults in faith-sharing groups, community service, and a variety of other activities.
- Help with Sunday Mass by serving as a liturgical minister, such as a Eucharistic minister, usher or sacristan, or by singing in one of the choirs.
- Foster the spiritual growth of our youth by serving as a Religious Education Program catechist or room parent, or serving as a Children's Liturgy of the Word leader.
- Participate actively in the school parent's association or sports program.
- Serve as a minister of care, bringing Holy Communion as well as a friendly smile to Catholics in area nursing homes and hospitals.

FOR MORE INFORMATION
contact the parish at 773-281-0371
or visit www.stclementchurch.org.

The grave of our first fruits



Planned Offering Program



We Give out of Gratitude

The Planned Offering Program (POP) provides an opportunity for all parishioners to give of their “first fruits.” In gratitude to God for our many blessings, we reflect first on what we can reasonably give back to God before attempting to fit all other obligations into our lives. This is **STEWARDSHIP**.

As a parish, Saint Clement models *stewardship* by:

- providing opportunities to enhance our relationship with God through prayer and sacraments
- encouraging service to others and supporting social justice issues
- donating 9% of the general collection to charitable causes through the **Clement Commits** program, thus eliminating second collections

Participation in POP assists Saint Clement parish as well as all parishioners in their commitment to financial *stewardship* by:

- allowing for more accurate and responsible budget planning
- encouraging parishioners to consciously decide what is a reasonable amount to contribute

Saint Clement is a parish of approximately 3,000 households. Last year’s POP participants numbered 677. Our goal this year is to have at least 1,000. The amount of your pledge is not as important as the act of discerning what you can reasonably return to God in gratitude for what you have been given.

Please know that whatever amount you decide to give, we thank God for your committed generosity.

Determine Your Gifts

In gratitude for God’s many blessings, we will strive to live as faithful stewards in 2009.

I. In gratitude for the gift of **FAITH**, we pledge to:

- Share our time with God, becoming more aware of God’s presence in our lives through daily prayer, weekly Sunday Mass, frequent reception of Sacraments, and participation in spiritual formation opportunities.

II. In gratitude for the gift of **HOPE**, we pledge to:

- Share our talent by participating in Christian service, either within the parish or in the community.

III. In gratitude for the gift of **LOVE**, we pledge to:

- Share our treasure by participating in the **Planned Offering Program and Clement Commits** program, pledging \$_____ annually.

We will give:

- \$_____ monthly
- \$_____ quarterly
- \$_____ one-time donation

We have selected the following payment option:

- Envelope
- Automatic Payment
 - from my checking account (please include voided check)
 - from my Credit Card
 - VISA
 - MasterCard

Acct #: _____

Exp. _____

- We want to support Saint Clement Church financially on a regular basis, but prefer not to specify a dollar amount at this time.

(To seal envelope, detach at perforation and moisten glue.)